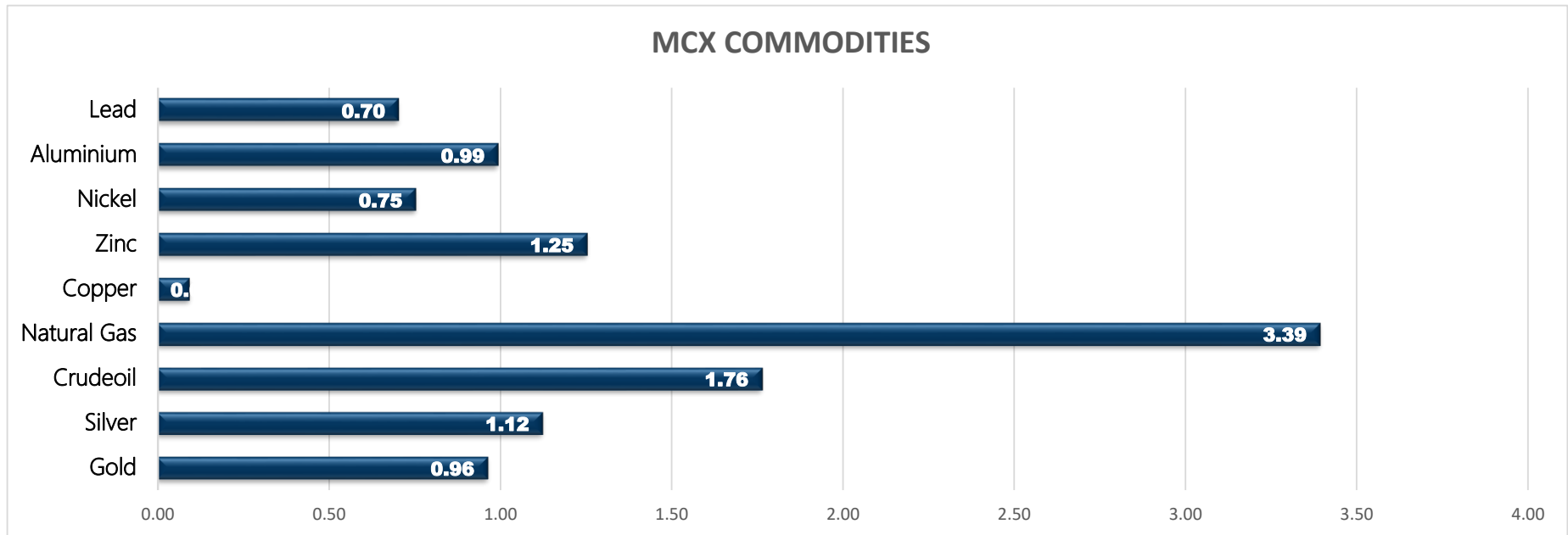


Commodity	Close	% Change
Gold	46362.00	0.96
Silver	66634.00	1.12
Crudeoil	4444.00	1.76
Natural Gas	189.00	3.39
Copper	689.35	0.09
Zinc	226.45	1.25
Nickel	1256.70	0.75
Aluminium	182.75	0.99
Lead	165.45	0.70

Commodity	Ltp*	% Change
Gold\$	1735.37	-0.11
Silver\$	25.02	-0.38
Crudeoil\$	59.77	0.74
Natural Gas\$	2.52	2.61
Lme Copper	8917.00	-0.15
Lme Zinc	2824.50	-0.21
Lme Nickel	16570.00	-0.30
Lme Lead	1975.50	-0.33
Lme Aluminium	2257.50	-0.09

Economical Data	
EUR	German Factory Orders m/m
EUR	French Trade Balance
EUR	PPI m/m
EUR	French 10-y Bond Auction
EUR	ECB Monetary Policy Meeting Accor
USD	Unemployment Claims
USD	Natural Gas Storage
USD	Fed Chair Powell Speaks

MCX COMMODITIES



MCX MARKET SYNOPSIS

Contract	Open	High	Low	Close	Rs Chg	% Chg	Volume	OI	% Chg
Copper Apr	686.55	694.85	685.70	689.35	0.65	0.09	11171	2745	-1.08
Copper May	686.55	695.00	686.55	690.00	0.90	0.13	279	219	20.33
Zinc Apr	223.10	227.15	223.05	226.45	2.80	1.25	7126	2301	11.32
Zinc May	222.85	225.20	222.85	224.90	2.05	0.92	67	164	10.81
Nickel Apr	1240.00	1266.20	1238.50	1256.70	9.30	0.75	6754	1416	-7.21
Nickel May	1240.20	1268.60	1240.20	1259.80	11.20	0.90	148	96	9.09
Aluminium Apr	180.60	183.20	180.40	182.75	1.80	0.99	2593	2009	14.41
Aluminium May	179.85	181.80	179.85	181.70	1.75	0.97	62	105	28.05
Lead Apr	164.00	165.70	163.85	165.45	1.15	0.70	2293	467	1.97
Lead May	164.70	165.00	163.15	164.00	0.60	0.37	116	9	12.50

MCX PIVOT

Contract	Sup - 3	Sup - 2	Sup - 1	Pivot	Res - 1	Res - 2	Res - 3	OI Status
Copper Apr	676.10	680.90	685.20	690.00	694.30	699.10	703.40	Short Covering
Zinc Apr	220.00	221.50	224.10	225.60	228.20	229.70	232.30	Fresh Buying
Nickel Apr	1213.70	1226.10	1241.40	1253.80	1269.10	1281.50	1296.80	Short Covering
Aluminium Apr	178.20	179.30	181.00	182.10	183.80	184.90	186.60	Fresh Buying
Lead Apr	162.40	163.10	164.30	165.00	166.20	166.90	168.10	Fresh Buying

INTERNATIONAL MARKET SYNOPSIS

Commodity	Open	High	Low	Ltp*	Rs Chg	% Chg	LME STOCKS	
LME Copper	9047.00	9063.00	8891.50	8930.00	-13.00	-0.15	LME Copper	6900
LME Zinc	2826.00	2841.00	2812.50	2830.50	-6.00	-0.21	LME Zinc	-1000
LME Nickel	16740.00	16780.00	16590.00	16620.00	-50.00	-0.30	LME Nickel	-786
LME Lead	1967.00	1997.00	1959.00	1982.00	-6.50	-0.33	LME Lead	-100
LME Aluminium	2260.00	2265.50	2248.00	2259.50	-2.00	-0.09	LME Aluminium	-22150

INTERNATIONAL PIVOT

Commodity	Sup - 3	Sup - 2	Sup - 1	Pivot	Res - 1	Res - 2	Res - 3
LME Copper	8689	8790	8860	8962	9032	9133	9203
LME Zinc	2787	2800	2815	2828	2844	2857	2872
LME Nickel	16357	16473	16547	16663	16737	16853	16927
LME Lead	1924	1941	1962	1979	2000	2017	2038
LME Aluminium	2232	2240	2250	2258	2267	2275	2285

COPPER

Copper trading range for the day is 680.9-699.1.

Copper prices gained as downstream demand will improve further amid a traditional high season and many copper smelters will conduct maintenance in April.

Yangshan copper premium was last at \$57 a tonne, hovering around its lowest since Nov. 30, 2020

Higher Chinese imports herald coming copper scrap surge

Warehouse stock for Copper at LME was at 150325mt that is up by 6900mt.



ZINC

Zinc trading range for the day is 221.5-229.7.

Zinc prices increased amid falling US dollar and US Treasury yields, and IMF raised its 2021 growth outlook for the global economy to 6%.

Treatment charges for domestic zinc concentrate continued to fall and rising production costs supported prices.

Data showed that social inventories of refined zinc ingots decreased 14,500 mt in the week ended April 2 to 233,500 mt.

Warehouse stock for Zinc at LME was at 267650mt that is down by -1000mt.



NICKEL

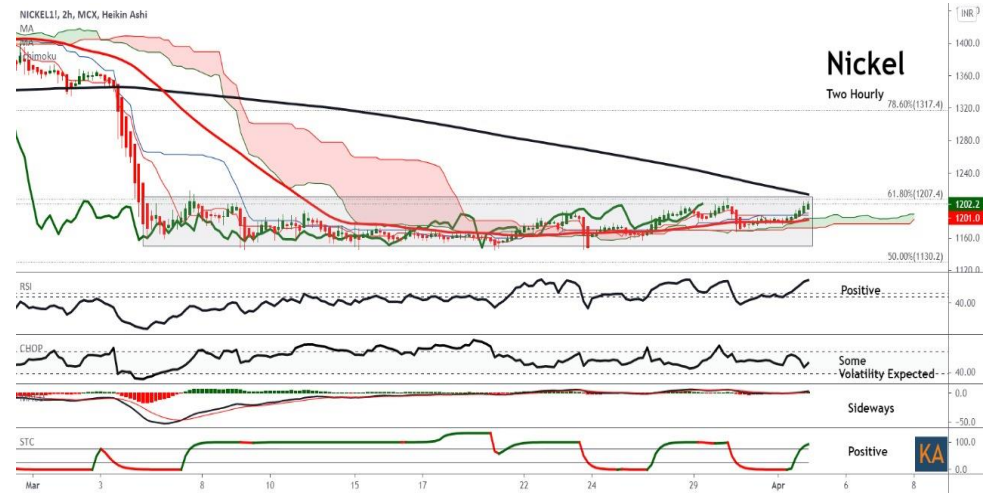
Nickel trading range for the day is 1226.1-1281.5.

Nickel prices gained as support seen after IMF predicted that China's economy will grow by 8.4%.

The IMF raised its global growth forecast to 6% this year, the fastest growth rate in 40 years

US Treasury Secretary Yellen encouraged financial institutions to "adjust their investment portfolios and strategies" to meet climate targets

Warehouse stock for Nickel at LME was at 258612mt that is down by -786mt.



ALUMINIUM

Aluminium trading range for the day is 179.3-184.9.

Aluminium prices gained as new US infrastructure plan to boost market confidence.

The US economic data was upbeat last week, with new orders growing strongly

Upbeat PMI in China boosted bulls confidence, bolstering commodities.

Warehouse stock for Aluminium at LME was at 1860125mt that is down by -22150mt.



SPREAD SYNOPSIS

Copper				
Month	Rate	Apr	May	Jun
Apr	689.35		0.65	1.25
May	690.00			0.60
Jun	690.60			

Zinc				
Month	Rate	Apr	May	Jun
Apr	226.45		-1.55	-3.05
May	224.90			-1.50
Jun	223.40			

Spread History			
Commodity	Max	Min	Avg
Copper	-19.90	5.36	64.00
Zinc	-7.25	0.37	2.40
Nickel	-7.25	0.37	2.40
Aluminium	-7.10	1.04	3.10
Lead	-22.20	3.71	13.20

Nickel				
Month	Rate	Apr	May	Jun
Apr	1256.70		3.10	6.10
May	1259.80			3.00
Jun	1262.80			

Aluminium				
Month	Rate	Apr	May	Jun
Apr	182.75		-1.05	-2.10
May	181.70			-1.05
Jun	180.65			

COPPER PRICE MOVEMENT SINCE 2011													
Year	JAN	FEB	MAR	APR	MAY	JUN	JUL	AUG	SEP	OCT	NOV	DEC	Growth
2011	451.90	445.75	425.30	415.90	417.35	421.10	436.85	427.10	349.80	392.95	409.75	406.00	-33.50
	2.82	-1.36	-4.59	-2.21	0.35	0.90	3.74	-2.23	-18.10	12.34	4.28	-0.92	-7.62
2012	417.15	417.70	431.65	443.90	420.25	429.40	422.55	424.30	441.05	419.70	436.30	443.75	37.75
	2.75	0.13	3.34	2.84	-5.33	2.18	-1.60	0.41	3.95	-4.84	3.96	1.71	9.30
2013	440.05	418.20	410.20	381.00	413.05	406.60	421.55	486.95	466.40	452.50	444.40	468.55	24.80
	-0.83	-4.97	-1.91	-7.12	8.41	-1.56	3.68	15.51	-4.22	-2.98	-1.79	5.43	5.59
2014	444.95	443.20	404.15	403.00	410.80	422.35	436.10	417.95	416.00	414.70	390.75	399.10	-69.45
	-5.04	-0.39	-8.81	-0.28	1.94	2.81	3.26	-4.16	-0.47	-0.31	-5.78	2.14	-14.82
2015	342.85	371.80	378.45	404.60	386.65	368.75	335.40	341.75	342.70	336.55	301.15	315.50	-83.60
	-14.09	8.44	1.79	6.91	-4.44	-4.63	-9.04	1.89	0.28	-1.79	-10.52	4.77	-20.95
2016	311.60	322.00	321.25	334.20	312.50	327.15	329.70	305.60	328.55	326.05	396.05	372.90	57.40
	-1.24	3.34	-0.23	4.03	-6.49	4.69	0.78	-7.31	7.51	-0.76	21.47	-5.85	18.19
2017	406.10	397.85	380.75	367.60	368.75	385.20	410.65	434.55	427.95	444.70	431.40	466.00	93.10
	8.90	-2.03	-4.30	-3.45	0.31	4.46	6.61	5.82	-1.52	3.91	-2.99	8.02	24.97
2018	450.90	446.00	436.80	449.40	457.05	446.15	430.15	414.00	452.95	435.70	433.10	407.75	-58.25
	-3.24	-1.09	-2.06	2.88	1.70	-2.38	-3.59	-3.75	9.41	-3.81	-0.60	-5.85	-12.50
2019	437.60	464.70	451.05	450.30	404.50	411.05	444.15	443.95	438.05	437.95	432.60	441.25	33.50
	7.32	6.19	-2.94	-0.17	-10.17	1.62	8.05	-0.05	-1.33	-0.02	-1.22	2.00	8.22
2020	427.25	421.80	376.80	403.45	416.20	464.70	500.75	527.30	525.20	526.40	582.30	594.70	153.45
	-3.17	-1.28	-10.67	7.07	3.16	11.65	7.76	5.30	-0.40	0.23	10.62	2.13	34.78
2021	596.40	702.95	667.95										73.25
	0.29	17.87	-4.98										12.32
Average	-1.25	2.69	-2.53	0.32	-1.17	1.29	2.89	1.32	-0.10	0.35	2.05	2.44	Average

## ZINC PRICE MOVEMENT SINCE 2011

Year	JAN	FEB	MAR	APR	MAY	JUN	JUL	AUG	SEP	OCT	NOV	DEC	Growth
2011	107.25	111.90	103.50	101.20	101.30	103.50	109.95	104.85	93.20	93.75	101.35	98.45	-10.55
	-1.61	4.34	-7.51	-2.22	0.10	2.17	6.23	-4.64	-11.11	0.59	8.11	-2.86	-9.68
2012	105.60	104.00	102.85	107.10	107.15	103.95	103.20	100.60	110.45	99.30	110.55	111.45	13.00
	7.26	-1.52	-1.11	4.13	0.05	-2.99	-0.72	-2.52	9.79	-10.10	11.33	0.81	13.20
2013	113.95	111.05	102.90	110.50	106.30	109.70	109.55	128.25	117.80	118.25	116.00	129.05	17.60
	2.24	-2.54	-7.34	7.39	-3.80	3.20	-0.14	17.07	-8.15	0.38	-1.90	11.25	15.79
2014	122.80	130.95	119.05	123.95	122.40	132.45	144.55	142.90	141.10	143.40	138.00	137.20	8.15
	-4.84	6.64	-9.09	4.12	-1.25	8.21	9.14	-1.14	-1.26	1.63	-3.77	-0.58	6.32
2015	130.40	127.70	129.90	149.75	141.05	127.10	122.85	121.30	108.90	109.10	103.20	106.15	-31.05
	-4.96	-2.07	1.72	15.28	-5.81	-9.89	-3.34	-1.26	-10.22	0.18	-5.41	2.86	-22.63
2016	109.25	122.45	118.40	129.20	129.30	142.15	148.80	155.90	158.10	163.90	185.55	173.80	67.65
	2.92	12.08	-3.31	9.12	0.08	9.94	4.68	4.77	1.41	3.67	13.21	-6.33	63.73
2017	193.10	187.70	180.40	169.45	165.95	178.25	179.50	200.95	210.20	215.05	205.95	207.60	33.80
	11.10	-2.80	-3.89	-6.07	-2.07	7.41	0.70	11.95	4.60	2.31	-4.23	0.80	19.45
2018	228.60	227.75	214.10	211.75	209.05	202.15	180.40	176.10	186.65	192.60	180.20	171.95	-35.65
	10.12	-0.37	-5.99	-1.10	-1.28	-3.30	-10.76	-2.38	5.99	3.19	-6.44	-4.58	-17.17
2019	195.15	197.80	221.35	223.20	203.00	200.50	192.25	185.30	185.55	187.85	185.05	179.00	7.05
	13.49	1.36	11.91	0.84	-9.05	-1.23	-4.11	-3.62	0.13	1.24	-1.49	-3.27	4.10
2020	174.45	154.85	145.50	150.60	159.00	163.50	184.00	196.05	190.80	201.80	220.20	214.40	35.40
	-2.54	-11.24	-6.04	3.51	5.58	2.83	12.54	6.55	-2.68	5.77	9.12	-2.63	11.81
2021	205.90	219.55	220.00										5.60
	-3.96	6.63	0.20										11.81
Average	0.89	1.16	-2.09	2.65	-2.59	0.61	2.69	2.59	-0.91	1.82	0.66	0.77	Average

## NICKEL PRICE MOVEMENT SINCE 2011

Year	JAN	FEB	MAR	APR	MAY	JUN	JUL	AUG	SEP	OCT	NOV	DEC	Growth
2011	1243.90	1294.00	1165.40	1202.40	1045.80	1037.70	1098.80	1022.90	898.80	940.90	869.60	992.20	-119.60
	11.88	4.03	-9.94	3.17	-13.02	-0.77	5.89	-6.91	-12.13	4.68	-7.58	14.10	-10.76
2012	1050.20	974.30	927.40	936.60	923.80	935.40	892.80	884.40	978.50	878.50	931.70	935.70	-56.50
	5.85	-7.23	-4.81	0.99	-1.37	1.26	-4.55	-0.94	10.64	-10.22	6.06	0.43	-5.69
2013	979.10	895.70	921.50	824.00	826.70	823.90	829.20	928.20	869.80	892.20	836.90	864.50	-71.20
	4.64	-8.52	2.88	-10.58	0.33	-0.34	0.64	11.94	-6.29	2.58	-6.20	3.30	-7.61
2014	855.80	902.80	945.50	1097.40	1139.60	1124.30	1130.40	1140.30	1016.80	971.00	996.80	945.70	81.20
	-1.01	5.49	4.73	16.07	3.85	-1.34	0.54	0.88	-10.83	-4.50	2.66	-5.13	9.49
2015	922.90	874.90	779.70	881.00	808.00	744.50	698.50	668.10	661.90	660.90	583.50	582.00	-363.70
	-2.41	-5.20	-10.88	12.99	-8.29	-7.86	-6.18	-4.35	-0.93	-0.15	-11.71	-0.26	-38.46
2016	579.80	577.60	549.10	629.10	568.50	636.40	700.00	651.20	703.30	696.30	751.20	706.00	169.20
	-0.38	-0.38	-4.93	14.57	-9.63	11.94	9.99	-6.97	8.00	-1.00	7.88	-6.02	29.07
2017	670.30	725.30	640.10	608.90	568.50	600.60	655.70	743.70	692.60	766.30	727.50	783.40	77.40
	-5.06	8.21	-11.75	-4.87	-6.63	5.65	9.17	13.42	-6.87	10.64	-5.06	7.68	10.96
2018	863.10	898.30	840.50	926.40	1024.40	1022.30	944.00	909.30	905.00	860.00	774.80	741.60	-41.80
	10.17	4.08	-6.43	10.22	10.58	-0.20	-7.66	-3.68	-0.47	-4.97	-9.91	-4.28	-5.34
2019	884.90	931.10	904.00	854.60	876.50	906.00	1013.50	1245.40	1216.80	1200.40	1005.50	1029.20	287.60
	19.32	5.22	-2.91	-5.46	2.56	3.37	11.87	22.88	-2.30	-1.35	-16.24	2.36	38.78
2020	943.80	901.00	860.10	922.60	940.40	975.00	1041.90	1135.70	1065.30	1142.70	1206.70	1212.20	183.00
	-8.30	-4.53	-4.54	7.27	1.93	3.68	6.86	9.00	-6.20	7.27	5.60	0.46	17.78
2021	1286.90	1367.70	1184.10										-28.10
	6.16	6.28	-13.42										-2.32
Average	3.37	1.29	-2.98	4.20	-3.04	0.58	3.21	3.12	-1.76	0.18	-3.13	1.80	Average

## ALUMINIUM PRICE MOVEMENT SINCE 2011

Year	JAN	FEB	MAR	APR	MAY	JUN	JUL	AUG	SEP	OCT	NOV	DEC	Growth
2011	114.05	114.35	116.05	122.55	119.25	112.20	115.55	112.60	107.95	106.85	103.10	106.95	-3.20
	3.54	0.26	1.49	5.60	-2.69	-5.91	2.99	-2.55	-4.13	-1.02	-3.51	3.73	-2.91
2012	112.15	112.65	108.35	108.05	111.35	105.65	103.95	103.00	110.95	101.85	113.35	111.75	4.80
	4.86	0.45	-3.82	-0.28	3.05	-5.12	-1.61	-0.91	7.72	-8.20	11.29	-1.41	4.49
2013	110.50	105.40	103.65	100.10	105.95	105.05	105.85	122.10	113.15	112.55	106.75	109.20	-2.55
	-1.12	-4.62	-1.66	-3.42	5.84	-0.85	0.76	15.35	-7.33	-0.53	-5.15	2.30	-2.28
2014	103.90	107.00	104.00	106.75	107.65	111.20	121.45	126.70	119.20	126.85	128.35	116.00	6.80
	-4.85	2.98	-2.80	2.64	0.84	3.30	9.22	4.32	-5.92	6.42	1.18	-9.62	6.23
2015	113.45	112.40	111.95	121.40	108.75	104.95	102.00	107.15	102.60	94.40	96.35	100.15	-15.85
	-2.20	-0.93	-0.40	8.44	-10.42	-3.49	-2.81	5.05	-4.25	-7.99	2.07	3.94	-13.66
2016	103.80	111.25	98.90	111.25	104.00	110.55	108.30	107.20	110.55	115.95	118.00	117.20	17.05
	3.64	7.18	-11.10	12.49	-6.52	6.30	-2.04	-1.02	3.12	4.88	1.77	-0.68	17.02
2017	123.40	126.45	126.20	123.90	123.90	123.55	121.95	135.30	137.90	138.60	131.00	143.30	26.10
	5.29	2.47	-0.20	-1.82	0.00	-0.28	-1.30	10.95	1.92	0.51	-5.48	9.39	22.27
2018	141.65	140.50	130.65	148.50	154.15	149.70	141.40	150.10	145.90	143.95	137.20	128.15	-15.15
	-1.15	-0.81	-7.01	13.66	3.80	-2.89	-5.54	6.15	-2.80	-1.34	-4.69	-6.60	-10.57
2019	136.00	151.10	149.15	146.20	145.35	143.20	140.35	138.70	134.60	132.00	133.55	137.25	9.10
	6.13	11.10	-1.29	-1.98	-0.58	-1.48	-1.99	-1.18	-2.96	-1.93	1.17	2.77	7.10
2020	139.10	136.70	134.45	131.00	131.70	137.95	140.90	146.15	143.80	152.95	167.05	160.95	23.70
	1.35	-1.73	-1.65	-2.57	0.53	4.75	2.14	3.73	-1.61	6.36	9.22	-3.65	17.27
2021	162.25	173.50	176.65										15.70
	0.81	6.93	1.82										9.75
Average	0.81	2.06	-1.72	2.42	-0.79	-0.99	1.00	3.31	-0.75	-0.12	0.53	0.61	Average



The logo for KEDIA ADVISORY is displayed within a dark blue rectangular box. The word "KEDIA" is written in a bold, yellow, sans-serif font, and the word "ADVISORY" is written in a white, sans-serif font to its right.

KEDIA STOCKS & COMMODITIES RESEARCH PVT LTD.  
Mumbai. INDIA.

For more details, please contact:  
Mobile: +91 9323406035 / 9320096333 / 9619551022  
Email: [info@kediaadvisory.com](mailto:info@kediaadvisory.com)  
URL: [www.kediaadvisory.com](http://www.kediaadvisory.com)  
SEBI REGISTRATION NUMBER - INH000006156

General Disclaimers: This Report is prepared and distributed by Kedia Stocks & Commodities Research Pvt Ltd. for information purposes only. The recommendations, if any, made herein are expression of views and/or opinions and should not be deemed or construed to be neither advice for the purpose of purchase or sale through KSCRPL nor any solicitation or offering of any investment /trading opportunity. These information / opinions / views are not meant to serve as a professional investment guide for the readers. No action is solicited based upon the information provided herein. Recipients of this Report should rely on information/data arising out of their own investigations. Readers are advised to seek independent professional advice and arrive at an informed trading/investment decision before executing any trades or making any investments. This Report has been prepared on the basis of publicly available information, internally developed data and other sources believed by KSCRPL to be reliable. KSCRPL or its directors, employees, affiliates or representatives do not assume any responsibility for, or warrant the accuracy, completeness, adequacy and reliability of such information / opinions / views. While due care has been taken to ensure that the disclosures and opinions given are fair and reasonable, none of the directors, employees, affiliates or representatives of KSCRPL shall be liable for any direct, indirect, special, incidental, consequential, punitive or exemplary damages, including lost profits arising in any way whatsoever from the information / opinions / views contained in this Report. The possession, circulation and/or distribution of this Report may be restricted or regulated in certain jurisdictions by appropriate laws. No action has been or will be taken by KSCRPL in any jurisdiction (other than India), where any action for such purpose(s) is required. Accordingly, this Report shall not be possessed, circulated and/ or distributed in any such country or jurisdiction unless such action is in compliance with all applicable laws and regulations of such country or jurisdiction. KSCRPL requires such recipient to inform himself about and to observe any restrictions at his own expense, without any liability to KSCRPL. Any dispute arising out of this Report shall be subject to the exclusive jurisdiction of the Courts in India.